

The abutment selections of the T-Rex system

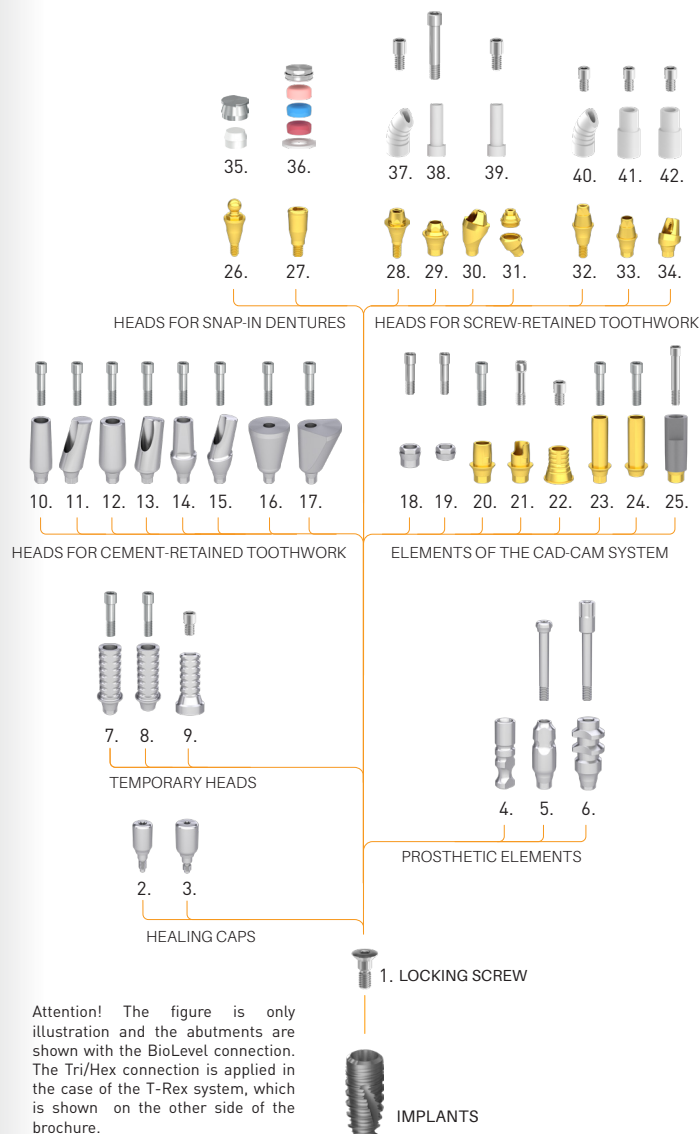
Implant diameters (mm): Ø2.9, Ø3.3, Ø3.7, Ø4.5, Ø5.5

	Denomination	Sulkus (mm)	Height (mm)
1	Locking screw	-	-
2	Healing abutment, narrow	2 4 6	
3	Healing abutment, anatomical	2 4 6	
4	Lab analog		12
5	Impression coping for closed tray		11
6	Impression coping for open tray		11
7	Temporary abutment, positioned		12
8	Temporary abutment, non-positioned		12
9	Temporary abutment, multi-unit level		12
10	Narrow abutment, straight		9
11	Narrow abutment, 15°, 25° angled		9
12	Universal abutment, straight		11
13	Universal abutment, 15°, 25°, 35° angled		11
14	Anatomical abutment, straight	2 4 6	
15	Anatomical abutment, 15°, 25° angled	2 4 6	
16	Trapezoidal abutment 15°, 25°, 35°		9 11 13
17	Delta abutment 15°, 25°, 35°		9 11 13
18	Interface, positioned	-	-
19	Interface, non-positioned	-	-
20	Titanium base		5
21	Flexi titanium base		5
22	Titanium base, multi-unit level		
23	Tube abutment, positioned		9
24	Tube abutment, non-positioned		9
25	Scanbody abutment, through-bolted		12
26	Ball retention abutment, 1,8 ; 2,5	0,5 1 2 3 4 5 6 7	
27	Locator abutment, straight	0,5 1 2 3 4 5 6 7	
28	Multi-unit abutment, straight	0,5 1 2 3 4 5 6 7	
29	Multi-unit abutment, through-bolted	0,5 1 2 3 4 5 6 7	
30	Multi-unit abutment, 20°, 30° angled	1 2 3 4 5 6 7	
31	Multi-Compact abutment, 20°, 30° angled	1 2 3 4 5 6 7	
32	Multi-unit SR abutment, straight	0,5 1 2 3 4 5 6 7	
33	Multi-unit SR abutment, through-bolted	0,5 1 2 3 4 5 6 7	
34	Multi-unit SR abutment, 20°, 30° angled	1 2 3 4 5 6 7	
35	OC metal cap, OC plastic insert, 1,8 ; 2,5	-	-
36	Locator cap set	-	-
37	Castable plastic abutment, angled, multi-unit	-	-
38	Castable plastic abutment, multi-unit, positioned	-	-
39	Castable plastic abutment, multi-unit, non-positioned	-	-
40	Castable plastic abutment, angled, multi-unit, SR	-	-
41	Castable plastic abutment, multi-unit, positioned, SR	-	-
42	Castable plastic abutment, multi-unit, non-positioned, SR	-	-

Sizes can be varied according to unique requests.

The functional structure of the T-Rex system

Grade 4 quality titanium is applied in the case of the implants and Grade 5 quality titanium is applied in the case of the abutments.



ABOUT THE COMPANY

Bionika Medline Kft. was established in 1989 by private individuals as a family-owned Hungarian company.

We have a 35-year-experience in the field of medical instruments and implant development, production and trade.

BIONIKA as a researcher, developer, manufacturer and distributor is present in dentistry, oral surgery, traumatology, orthopedics and rehabilitation in the medical-professional areas. According to our objective and perception, we attach great importance to the word „BIONIKA”, which marks a scientific thinking on the boundaries of biology, technology and electronics that combines these three areas in our researching and developing work.

Clinical and technological experiences: The continuous process, combination and utilization of clinical and technological experiences in development contributes to our success, up to the production base. Here you will find the best solutions and constructions suited to customer needs, which are under continuous development.

Development: The owners of BIONIKA put great emphasis on continuous product and technological research and development. Our products are developed in close collaboration with doctors and engineers, enabling us to ensure the world-class quality and practical utilization.

Quality: The quality of the products expected by our customers is guaranteed by design, manufacturing and quality management according to the harmonized European Union laws. The BIONIKA Medline Kft. is operated according to the EN ISO 9001 and the EN ISO 13485 quality management system. Our products are provided with CE marks.

Guarantee: After inserting the implant - the risk of the ossification process is assumed by BIONIKA, independently of cause and effect relationship – exchange guarantee is ensured within one year after the purchase. Otherwise, we provide a long-term, 10-year guarantee for our products.



The distinctive characteristics of the T-Rex system

Connection: „Tri/Hex”

Platform switching

The diameter of the abutment is smaller than the outer part of the implant which is connected to the bone. This way the soft tissue closes upon the ingoing aperture and the implant's connecting surface of the bone nest, covering, insulating that like a sealing ring.

Exceptional primer stability

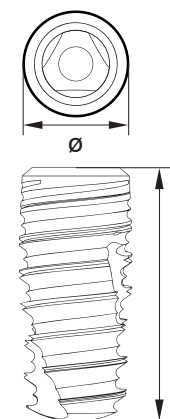
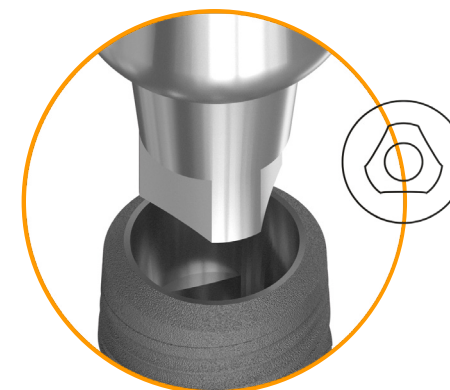
in the case of bad bone quality due to the multifunctional geometrical thread.

Anatomical root form

The T-Rex follows the form of the anatomical tooth root. Due to the conicity, high thread pitch, high thread deepness, self-closing and self-tapping shaping of the implant screw thread, it has a bone-compacting effect. Thus, there is an option for immediate loadness of the implant as needed as a result of the high primer stability.

„BioTis” surface

A variable insertion direction on the go for a perfect positioning



Sizes available of the T-Rex implants

diameter D (mm)	Inserting length L (mm)					
	6	8	10	11.5	13	16
ø 3.3		•	•	•	•	•
ø 3.8	•	•	•	•	•	•
ø 4.3	•	•	•	•	•	•
ø 5.3	•	•	•	•	•	
ø 6.3	•	•	•	•		

BIONIKA Medline Kft • 3516 Miskolc, Tégla u. 29.
www.bionika.hu • info@bionika.hu
phone: +36 70 362-9235