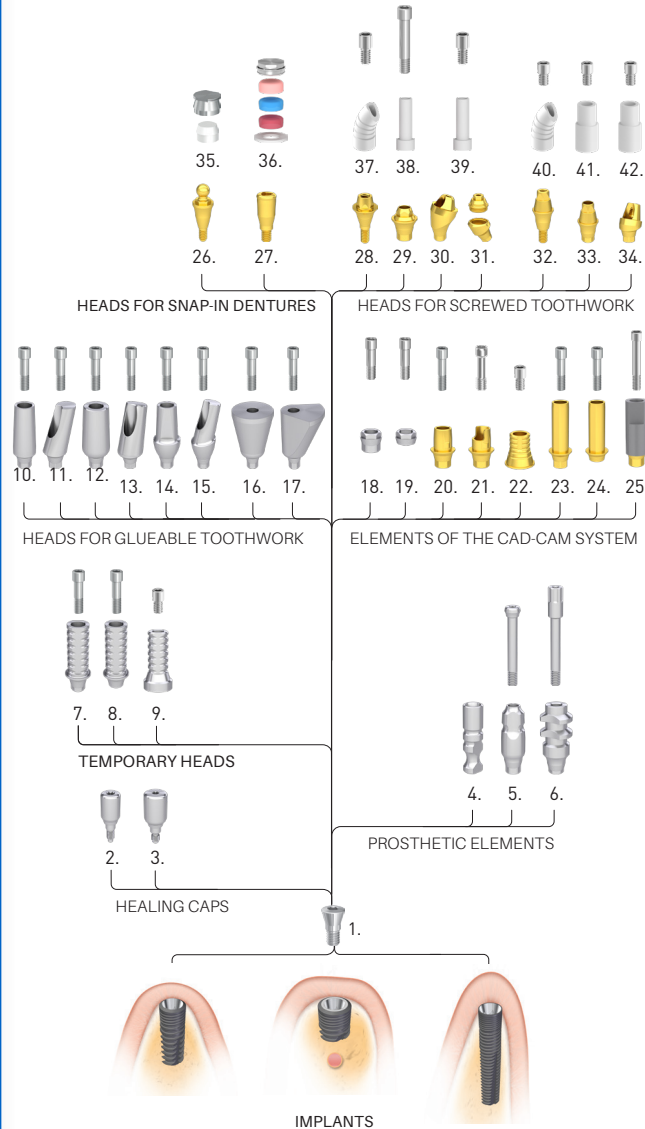


## The abutments of the Cortical System

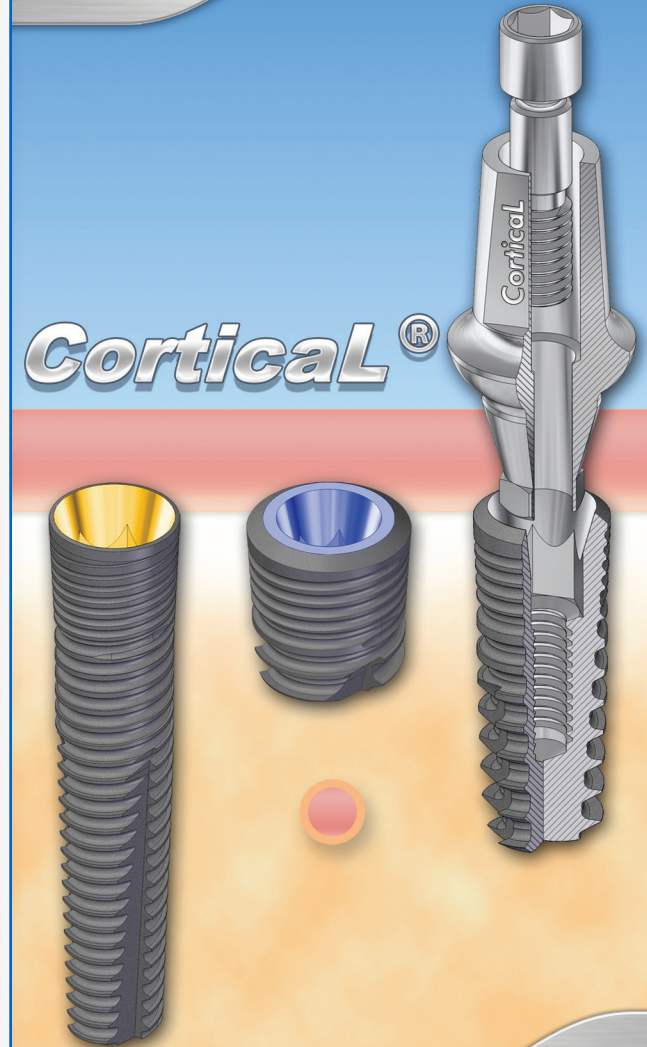
	Denomination	Sulkus (mm)	Height (mm)
1	Locking screw	-	-
2	Healing abutment, narrow	2 4 6	
3	Healing abutment, anatomical	2 4 6	
4	Lab analog		12
5	Impression coping for closed tray		11
6	Impression coping for open tray		11
7	Temporary abutment, positioned		12
8	Temporary abutment, non-positioned		12
9	Temporary abutment, multi-unit level		12
10	Narrow abutment, straight		9
11	Narrow abutment, 15°, 25° angled		9
12	Universal abutment, straight		11
13	Universal abutment, 15°, 25°, 35° angled		11
14	Anatomical abutment, straight	2 4 6	
15	Anatomical abutment, 15°, 25° angled	2 4 6	
16	Trapezoidal abutment 15°, 25°, 35°		9 11 13
17	Delta abutment 15°, 25°, 35°		9 11 13
18	Interface, positioned	-	-
19	Interface, non-positioned	-	-
20	Titanium base		5
21	Flexi titanium base		5
22	Titanium base, multi-unit level		
23	Tube abutment, positioned		9
24	Tube abutment, non-positioned		9
25	Scanbody abutment, through-bolted		12
26	Ball retention abutment, 1,8 ; 2,5	0,5 1 2 3 4 5 6 7	
27	Locator abutment, straight	0,5 1 2 3 4 5 6 7	
28	Multi-unit abutment, straight	0,5 1 2 3 4 5 6 7	
29	Multi-unit abutment, through-bolted	0,5 1 2 3 4 5 6 7	
30	Multi-unit abutment, 20°, 30° angled	1 2 3 4 5 6 7	
31	Multi-Compact abutment, 20°, 30° angled	1 2 3 4 5 6 7	
32	Multi-unit SR abutment, straight	0,5 1 2 3 4 5 6 7	
33	Multi-unit SR abutment, through-bolted	0,5 1 2 3 4 5 6 7	
34	Multi-unit SR abutment, 20°, 30° angled	1 2 3 4 5 6 7	
35	OC metal cap, OC plastic insert, 1,8 ; 2,5	-	-
36	Locator cap set	-	-
37	Castable plastic abutment, angled, multi-unit	-	-
38	Castable plastic abutment, multi-unit, positioned	-	-
39	Castable plastic abutment, multi-unit, non-positioned	-	-
40	Castable plastic abutment, angled, multi-unit, SR	-	-
41	Castable plastic abutment, multi-unit, positioned, SR	-	-
42	Castable plastic abutment, multi-unit, non-positioned, SR	-	-

## CorticalL® The functional structure of the abutment system



+36 20 9583629  
info@bionika.hu  
www.cortical.hu

## IMPLANT SYSTEM



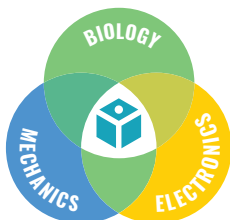
T-MD07-052-v02-250409-EN

+36 20 9583629  
info@bionika.hu  
www.cortical.hu

## Company

BIONIKA Medline Orvostechnikai Kft. Is a member of the Swedish-Hungarian group of companies. It was founded in 1989. The owners of the company are Swedish and Hungarian citizens. We have a 30-year-experience in the field of medical instruments and implant development, production and trade.

BIONIKA as a researcher, developer, manufacturer and distributor is present in dentistry, oral surgery, traumatology, orthopedics and rehabilitation in the medical-professional areas. According to our objective and perception, we attach great importance to the word „BIONIKA“, which marks a scientific thinking on the boundaries of biology, technology and electronics that combines these three areas in our researching and developing work.

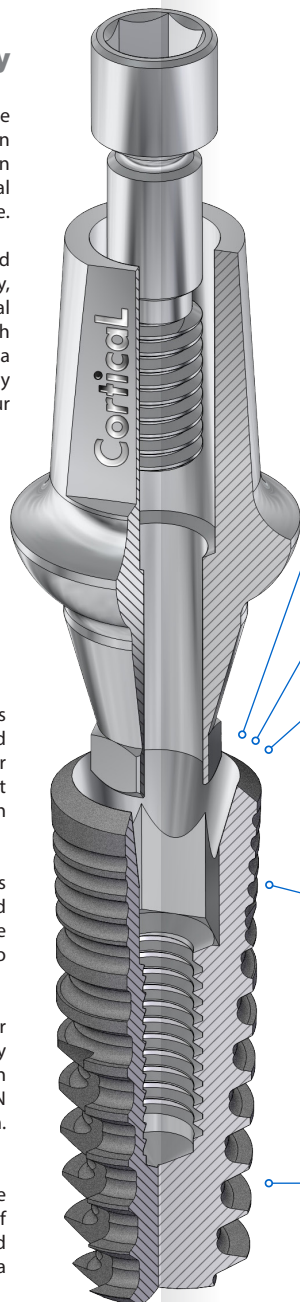


**Clinical and technological experiences:** The continuous process, combination and utilization of clinical and technological experiences in development contributes to our success, up to the production base. Here you will find the best solutions and constructions suited to customer needs, which are under continuous development.

**Development:** The owners of BIONIKA put great emphasis on continuous product and technological research and development. Our products are developed in close collaboration with doctors and engineers, enabling us to ensure the world-class quality and practical utilization.

**Quality:** The quality of the products expected by our customers is guaranteed by design, manufacturing and quality management according to the harmonized European Union laws. The BIONIKA Medline Kft. is operated according to the EN ISO 9001 and the EN ISO 13485 quality management system. Our products are provided with CE marks.

**Guarantee:** After inserting the implant - the risk of the ossification process is assumed by BIONIKA, independently of cause and effect relationship – exchange guarantee is ensured within one year after the purchase. Otherwise, we provide a long-term, 10-year guarantee for our products.



## CorticalL System

Grade 4 quality titanium is applied in the case of the implants and Grade 5 quality titanium is applied in the case of the abutments. Our abutments can be made of Co-Cr material and POM or PEEK materials are applied in the case of plastic heads.

### Conical connection: Hex@con

The most perfect fixation is provided which is well-proven in the engineering practice. 30 degree cone angle is applied with the Cortical implant which eventuates micromotor-free power transmission and offers favorable conditions for the accurate open or closed spooned sampling, even in the case of bigger angle differences.

### Cortical Level:

The chances of the implant persistency are significantly improved by inserting the upper edge of the implant at the cortical level or below (from 0,5 to 1 mm) which is proven by surgical experiences on the long run.

### Platform switching:

The diameter of the abutment is smaller than the outer part of the implant which is connected to the bone. This way the soft tissue closes upon the ingoing aperture and the implant's connecting surface of the bone nest, covering, insulating that like as a sealing ring.

### Conical, spirally microstriated cortical surface:

The multi-paragraphed microstriated spiral surface can function as a significant weight bearing element connected to the cortical and ensuring micromotor-free condition for the fast inserting. This self-closing thread structure due to the cycloid cord thread geometry helps facilitating dynamic force convection and ensures micromotor-free condition for fast insertion.

### Root form, high thread pitch spongy thread:

Due to the conicity, high thread pitch, high thread deepness, self-tapping shaping of the thread, it has a bone-compacting effect. Thus, there is an option for immediate loadness of the implant as needed.

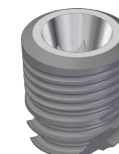
## CorticalL Normal Implant

diameter (mm)	inserting length (mm)			
	9	11	13	15
ø 3,5	●	●	●	●
ø 4,0	●	●	●	●
ø 4,5	●	●	●	●
ø 5,0	●	●	●	●
ø 6,0	●	●	●	●



## CorticalL Extra Short Implant

diameter (mm)	inserting length (mm)	
	6	7
ø 3,5	●	●
ø 4,0	●	●
ø 4,5	●	●
ø 5,0	●	●
ø 6,0	●	●



## CorticalL Extra Slim Implant

diameter (mm)	inserting length (mm)			
	9	11	13	15
ø 3,0	○	○	○	○

