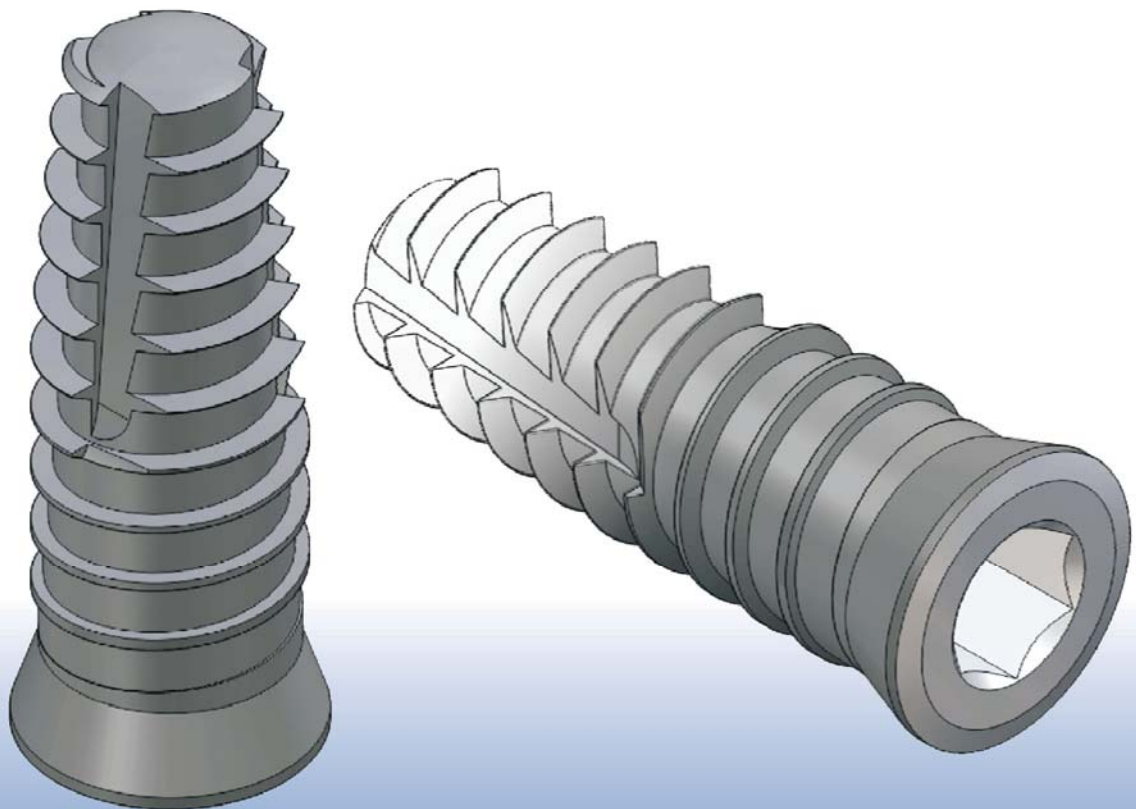




**B I O N I K A**



**BIOPLANT *ND***<sup>®</sup>

**IMPLANT SYSTEM**



## The abutments of the BIOPLANT ND System 1.

Image	Denomination	Typical size (mm)	Order code	
			Plat. Ø3,8	Plat. Ø4,1
	Normal head, straight	7	52.38.38.007	52.41.41.007
		9	52.38.38.009	52.41.41.009
	Normal head, 15° oblique	9	52.38.15.009	52.41.15.009
	Normal head, 25° oblique	9	52.38.25.009	52.41.25.009
	Anatomical head, straight	7	52.38.50.007	52.41.55.007
		9	52.38.50.009	52.41.55.009
	Anatomical head, 15° oblique	9	52.38.15.109	52.41.15.109
	Anatomical head, 25° oblique	9	52.38.25.109	52.41.25.109
	Universal head	11	52.38.50.011	52.41.55.011



## The abutments of the BIOPLANT ND System 2.







Image	Denomination	Typical size (mm)	Order code	
			Plat. Ø3,8	Plat. Ø4,1
	OT-CAP ball head, micro	0.5	52.38.18.000	52.41.18.000
		2	52.38.18.002	52.41.18.002
		4	52.38.18.004	52.41.18.004
	OT-CAP flexible interline, micro	1.8	52.28.18.001	52.28.18.001
	OT-CAP cap, micro	1.8	52.38.18.001	52.38.18.001
	<b>OT-CAP ball head, normal</b>	0,5	52.38.25.000	52.41.25.000
		2	52.38.25.002	52.41.25.002
		4	52.38.25.004	52.41.25.004
	OT-CAP flexible interline, normal	2.0	52.38.25.001	52.38.25.001
	OT-CAP cap, normal	2.0	52.48.25.001	52.48.25.001
	Pier head molding element, plastic, adaptor conical		52.38.48.007	52.38.48.007
	Pier cup	2	52.38.38.002	52.41.41.002
		4	52.38.38.004	52.41.41.004
		6	52.38.38.006	52.41.41.006

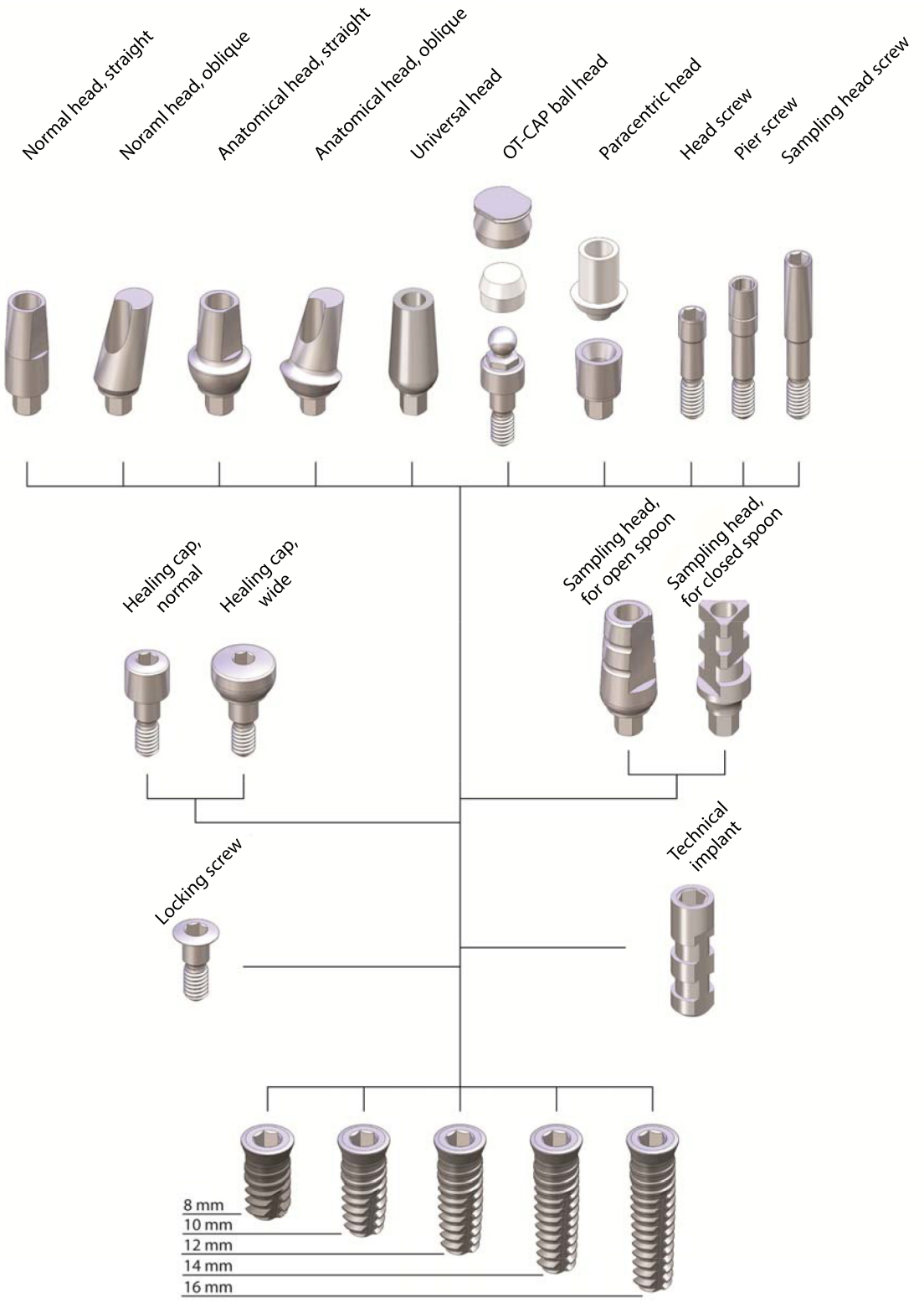
## The technical elements of the BIOPLANT ND Implant System

Image	Denomination	Typical size (mm)	Order code	
			Plat. Ø3,8	Plat. Ø4,1
	Head screw	M2.0x8/10.5	52.38.20.811	52.38.20.811
	Pier head screw	M2.0x09/15.5 M2.0x11/17.5 M2.0x13/19.5	52.38.20.216 52.38.20.418 52.38.20.620	52.38.20.216 52.38.20.418 52.38.20.620
	Sampling head screw	M2.0x8/16.5	52.38.20.817	52.38.20.817
	Healing cap, normal	2 4 6	52.38.38.002 52.38.38.004 52.38.38.006	52.41.41.002 52.41.41.004 52.41.41.006
	Healing cap, wide	2 4 6	52.38.50.002 52.38.50.004 52.38.50.006	52.41.55.002 52.41.55.004 52.41.55.006
	Sampling head for open spoon		52.38.50.010	52.41.55.010
	Sampling head for closed spoon		52.38.50.110	52.41.55.110
	Technical implant	3.8/3.5 ■ 4.6/4.0 ■ 4.6/4.3 ■ 5.0/5.0 ■ 6.7/6.7 ■	52.38.35.012 52.38.40.012	52.41.43.012 52.41.50.012 52.41.67.012



## BIOPLANT ND Implantátum Rendszer

Image	Denomination	Typical size (mm)	Order code	
			Plat. Ø3,8	Plat. Ø4,1
	Locking screw	3.8 ■ 4.1 ■	52.38.40.200	52.41.43.200
	ND Implant D3.8/3.5	38/3.5x08 ■ 38/3.5x10 ■ 38/3.5x12 ■ 38/3.5x14 ■ 38/3.5x16 ■	52.38.35.308 52.38.35.310 52.38.35.312 52.38.35.314 52.38.35.316	
	ND Implant D4.6/4.0	4.6/4.0x08 ■ 4.6/4.0x10 ■ 4.6/4.0x12 ■ 4.6/4.0x14 ■ 4.6/4.0x16 ■	52.38.40.008 52.38.40.010 52.38.40.012 52.38.40.014 52.38.40.016	
	ND Implant D4.6/4.3	4.6/4.3x08 ■ 4.6/4.3x10 ■ 4.6/4.3x12 ■ 4.6/4.3x14 ■ 4.6/4.3x16 ■		52.41.43.008 52.41.43.010 52.41.43.012 52.41.43.014 52.41.43.016
	ND Implant D5.0/5.0	5.0/5.0x06 ■ 5.0/5.0x08 ■ 5.0/5.0x10 ■ 5.0/5.0x12 ■ 5.0/5.0x14 ■		52.41.50.006 52.41.50.008 52.41.50.010 52.41.50.012 52.41.50.014
	ND Implant D6.7/6.7	6.7/6.7x06 ■ 6.7/6.7x08 ■ 6.7/6.7x10 ■ 6.7/6.7x12 ■		52.41.67.006 52.41.67.008 52.41.67.010 52.41.67.012



The abutments and technical elements of the BIOPLANT ND type Implants