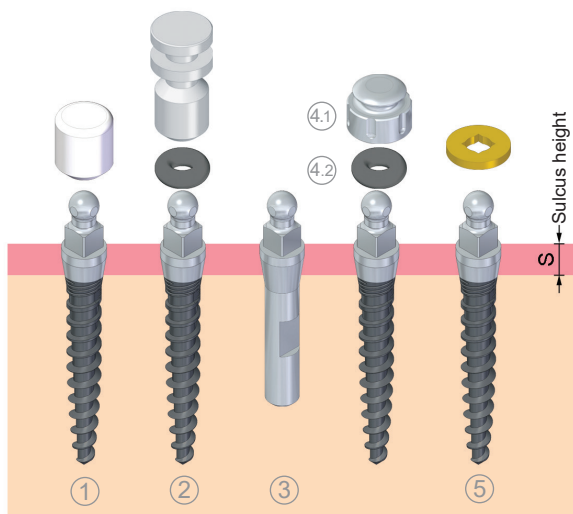


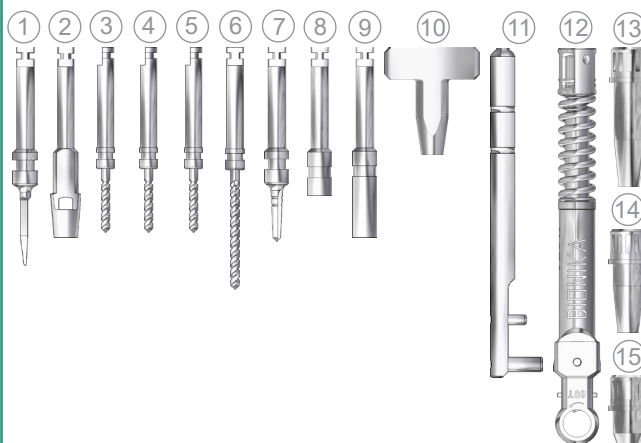
The abutments of the MDI Implant System

The basic function of the MDI Implant System is fixing the removable toothworks , by means of a flexible patent abutment.



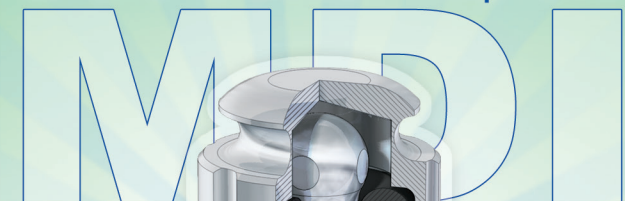
Type	Typical size (mm)			
	S Sulcus height		H Head height	
	2	4	7	9
1 Round head cap fastener	●	●		
2 Sampling head			●	●
3 Technical implant				
4.1 Metal cap				
4.2 Silicone rubber O-ring				
5 Metal washer ring				

Inserting instruments



Denomination	Typical size
1 Spear-pointed drill	3Lt x12/27mm
2 Gingiva punch	D 1,5x10/25mm
3 Drill, short	D 1,1x9/25mm
4 Drill, short	D 1,1x11/27mm
5 Drill, short	D 1,1x13/29mm
6 Drill, long	D 1,2x15/30mm
7 Chamfer drill	D 1,6x7/21mm
8 Implant driver, mechanical, short	4Lt 1,7x10/25mm
9 Implant driver, mechanical, long	4Lt 1,7x15/30mm
10 Manual driver T-key	4Lt 1,7x20/18mm
11 Winch for T-key	70mm
12 Ratchet torque wrench	90mm
13 Torque wrench driver interline, ribbed long	4Lt 1,7x21/28mm
14 Torque wrench driver interline , ribbed medium	4Lt 1,7x14/21mm
15 Torque wrench driver interline, ribbed short	4Lt 1,7x7/14mm

Micro Dental Implant



Compatible

About the company

BIONIKA Medline Orvosteknikai Kft. was founded in 1989. We have more than 20-year-experience in the field of medical instruments and implant development, production and trade. BIONIKA as a researcher, developer, manufacturer and distributor is present in dentistry, oral surgery, traumatology, orthopedics and rehabilitation in the medical-professional areas.

According to our objective and perception, we attach great importance to the word "BIONIKA", which marks a scientific thinking on the boundaries of biology, technology and electronics that combines these three areas in our researching and developing work.



Clinical and technological experiences: The continuous process, combination and utilization of clinical and technological experiences in development contributes to our success, up to the production base. Here you will find the best solutions and constructions suited to customer needs, which are under continuous development.

Development: The owners of BIONIKA put great emphasis on continuous product and technological research and development. Our products are developed in close collaboration with doctors and engineers, enabling us to ensure the world-class quality and practical utilization.

Quality: The quality of the products expected by our customers is guaranteed by design, manufacturing and quality management according to the harmonized European Union laws. The BIONIKA Medline Kft. is operated according to the EN ISO 9001 and the EN ISO 13485 quality management system. Our products are provided with CE marks.

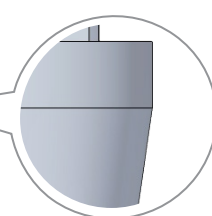
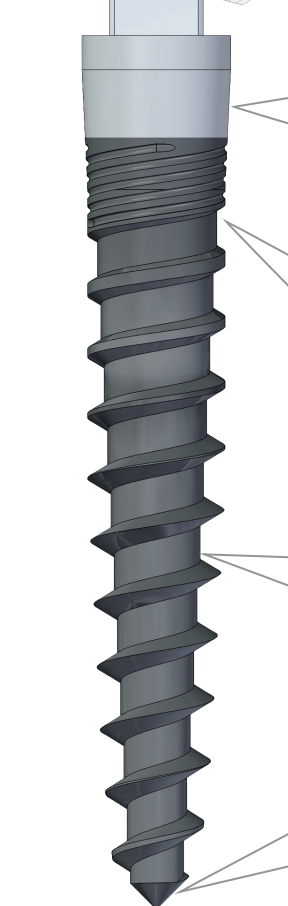
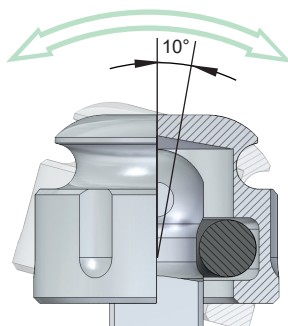
Guarantee: After inserting the implant - the risk of the ossification process is assumed by BIONIKA, independently of cause and effect relationship – exchange guarantee is ensured within one year after the purchase. Otherwise, we provide a long-term, 10-year guarantee for our products.

The MDI Implant System

The MDI Implant System is suitable in the case of harder than average and thin bone structures, for removable toothworks.

Distinctive constructional and applicational characteristics:

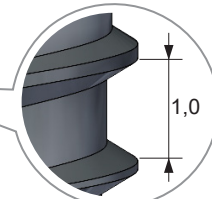
- Minimal invasive intervention - transgingival surgical technique possibility
- Flexible toothwork connection
- High primer stability - immediate „loadness”, with a torque above 35 Ncm, screwed into the jaw bone
- Imtec MDI compatibility



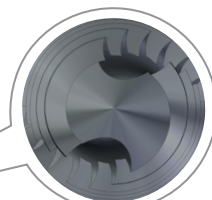
Polished surface in accordance with the size of 2-4 mm sulcus.



Conical cord thread on the upper neck part of the screw which exceptionally resists dynamic force reduction, gradually deepening and sharpening.



The thread form is well-adjusted to the spongy and the cortical bone structures as well. The self-compressional, self-tapping and self-closing conical thread form gradually deepens in the middle part of the implant screw.



Self-cutting thread edges with an anti-rotation function (for 2,9 mm diameter).

Sizes available of the MDI Implant System

Sulcus height : S=2-4mm

Diameter D (mm)	Sulcus S (mm)	inserting length L (mm)			
		9	11	13	15
ø 1,8	2	●	●	●	
	4				
ø 2,1	2	●	●	●	
	4				
ø 2,4	2	●	●	●	●
	4				
ø 2,9	2	●	●	●	●
	4				

