

## Sizes available of the PRIMER system abutments

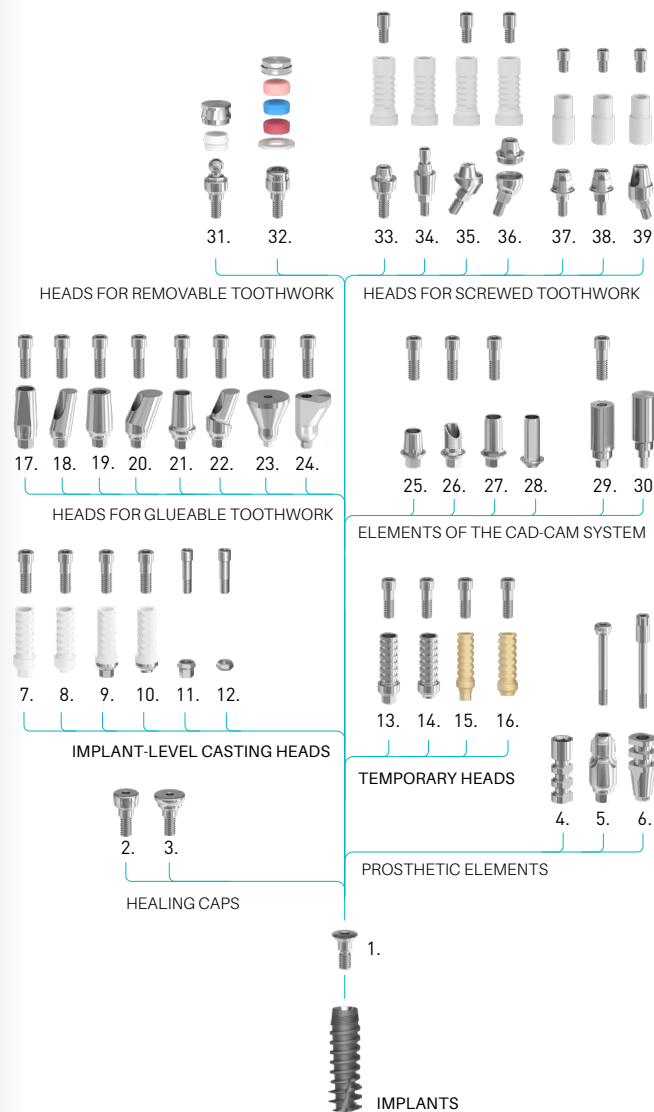
Implant diamters (mm):  $\emptyset 2.9$ ,  $\emptyset 3.3$ ,  $\emptyset 3.7$ ,  $\emptyset 4.5$ ,  $\emptyset 5.5$

	Denomination	Sulcus height (mm)	Head-height (mm)
1	Locking screw	-	-
2	Healing cap, narrow	2 4 6	-
3	Healing cap, anatomical	2 4 6	-
4	Technical implant		12
5	Sampling head for closed spoon		11
6	Sampling head for open spoon		11
7	Castable plastic head, positioned		12
8	Castable plastic head, non-positioned		12
9	Co-Cr, metal based cast head, positioned		12
10	Co-Cr, metal based cast head, non-positioned		12
11	Interface, positioned		
12	Interface, non-positioned		
13	Temporary head, positioned		12
14	Temporary head, non-positioned		12
15	Temporary head, positioned, PEEK		12
16	Temporary head, non-positioned, PEEK		12
17	Narrow head, straight		9
18	Narrow head, 15°, 25° oblique		9
19	Universal head, straight		11
20	Universal head, 15°, 25°, 25°, 45° oblique		11
21	Anatomical head, straight	2 4 6	
22	Anatomical head, 15°, 25° oblique	2 4 6	
23	Trapezoidal head 15°, 25°, 35°, 45°		9 11 13
24	Delta head 15°, 25°, 35°, 45°		9 11 13
25	Titanium base		5
26	Press ceramic base		5
27	Tube head, positioned		9
28	Tube head, non-positioned		9
29	Scanbody head, through-bolted		12
30	Scanbody head, screwable		12
31	Ball head	0,5 1 2 3 4 5 6 7	
32	Locator head, straight	0,5 1 2 3 4 5 6 7	
33	Multi-unit head, straight	0,5 1 2 3 4 5 6 7	
34	Multi-unit head, through-bolted	0,5 1 2 3 4 5 6 7	
35	Multi-unit head, 20°, 30° oblique	1 2 3 4 5 6 7	
36	Multi-Compat head, 20°, 30° oblique	1 2 3 4 5 6 7	
37	Multi-unit SR head, straight	0,5 1 2 3 4 5 6 7	
38	Multi-unit SR head, through-bolted	0,5 1 2 3 4 5 6 7	
39	Multi-unit SR head, 20°, 30° oblique	1 2 3 4 5 6 7	

Sizes can be varied according to the unique demands.

## The functional structure of the PRIMER system

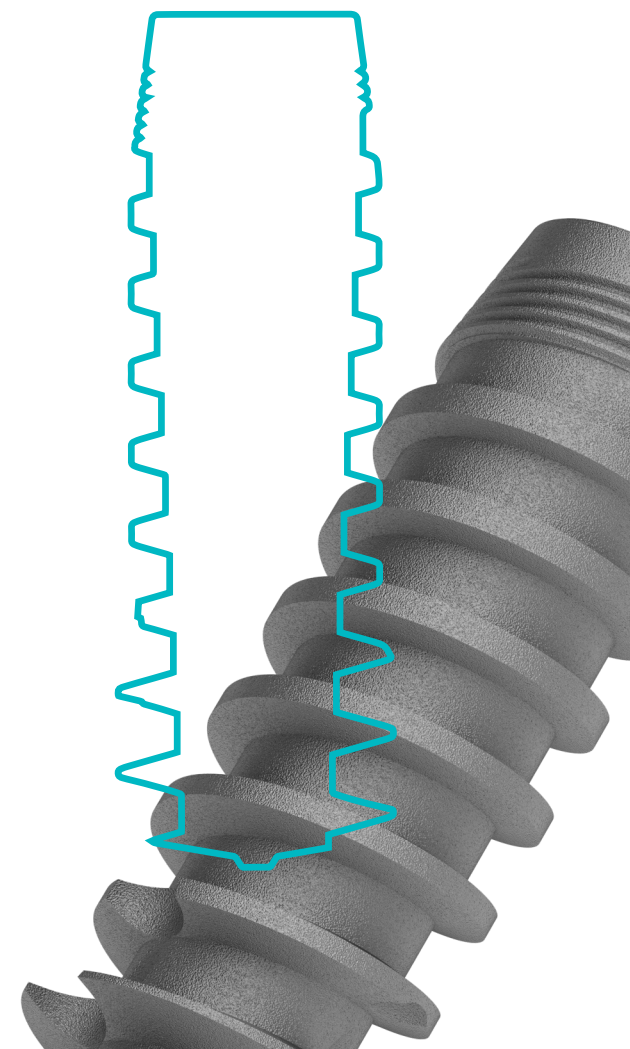
Grade 4 titanium is applied for the Implants and Grade 5 titanium is applied for the abutments. Our abutments can also be made from Co-Cr material, and for plastic heads we use POM or PEEK materials.



K18-MD07-063



## PRIMER Implant System



BIONIKA Medline Kft • 3516 Miskolc, Tégla u. 29.  
[www.bionika.hu](http://www.bionika.hu) • [info@bionika.hu](mailto:info@bionika.hu)  
 mobil: +36 70 670-6875

## ABOUT THE COMPANY

**BIONIKA Medline** Orvostechnikai Kft. Is a member of the Swedish-Hungarian group of companies. It was founded in 1989. The owners of the company are Swedish and Hungarian citizens. We have more than 30-year-experience in the field of medical instruments and implant development, production and trade.

BIONIKA as a researcher, developer, manufacturer and distributor is present in dentistry, oral surgery, traumatology, orthopedics and rehabilitation in the medical-professional areas. According to our objective and perception, we attach great importance to the word „BIONIKA“, which marks a scientific thinking on the boundaries of biology, technology and electronics that combines these three areas in our researching and developing work.

**Clinical and technological experiences:** The continuous process, combination and utilization of clinical and technological experiences in development contributes to our success, up to the production base. Here you will find the best solutions and constructions suited to customer needs, which are under continuous development.

**Development:** The owners of BIONIKA put great emphasis on continuous product and technological research and development. Our products are developed in close collaboration with doctors and engineers, enabling us to ensure the world-class quality and practical utilization.

**Quality:** The quality of the products expected by our customers is guaranteed by design, manufacturing and quality management according to the harmonized European Union laws. The BIONIKA Medline Kft. is operated according to the EN ISO 9001 and the EN ISO 13485 quality management system. Our products are provided with CE marks.

**Guarantee:** After inserting the implant - the risk of the ossification process is assumed by BIONIKA, independently of cause and effect relationship – exchange guarantee is ensured within one year after the purchase. Otherwise, we provide a long-term, 10-year guarantee for our products.

## Distinctive characteristics of the PRIMER Implant System



### Connection: Cone & hex

The complex and hexagon prism geometry ensures a perfect fixation. The 90 degree cone angle eventuates micromotor-free power transmission. It superimposes the powers deep right into the implant.

### Cortical Level

The chances of the implant persistency are significantly improved by inserting the upper edge of the implant at the cortical level or below.

### Platform switching

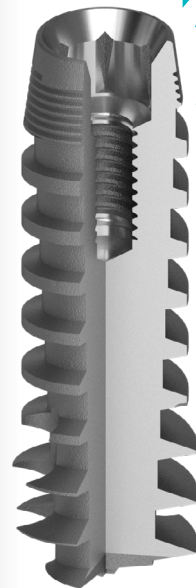
The diameter of the abutment is smaller than the outer part of the implant which is connected to the bone. The bone can move to the upper edge of the implant.

### Spirally microstriated surface

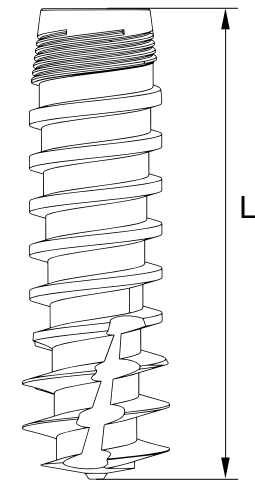
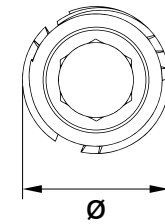
The microstriated spiral surface can function as a significant weight bearing element. The self-closing thread structure and the cycloid cord thread ensure a micromotor-free condition and fast inserting.

### Distal end

Its distal end is provided with a prolate, sharp thread.



## Sizes available of the PRIMER Implants



Ø: diameter (mm)	L: inserting length (mm)				
	8	10	11.5	13	15
Ø 3.3	●	●	●	●	●
Ø 3.7	●	●	●	●	●
Ø 4.5	●	●	●	●	-
Ø 5.5	●	●	●	●	-

Sizes can be varied according to the unique demands.