

BIOSS System selections of abutments

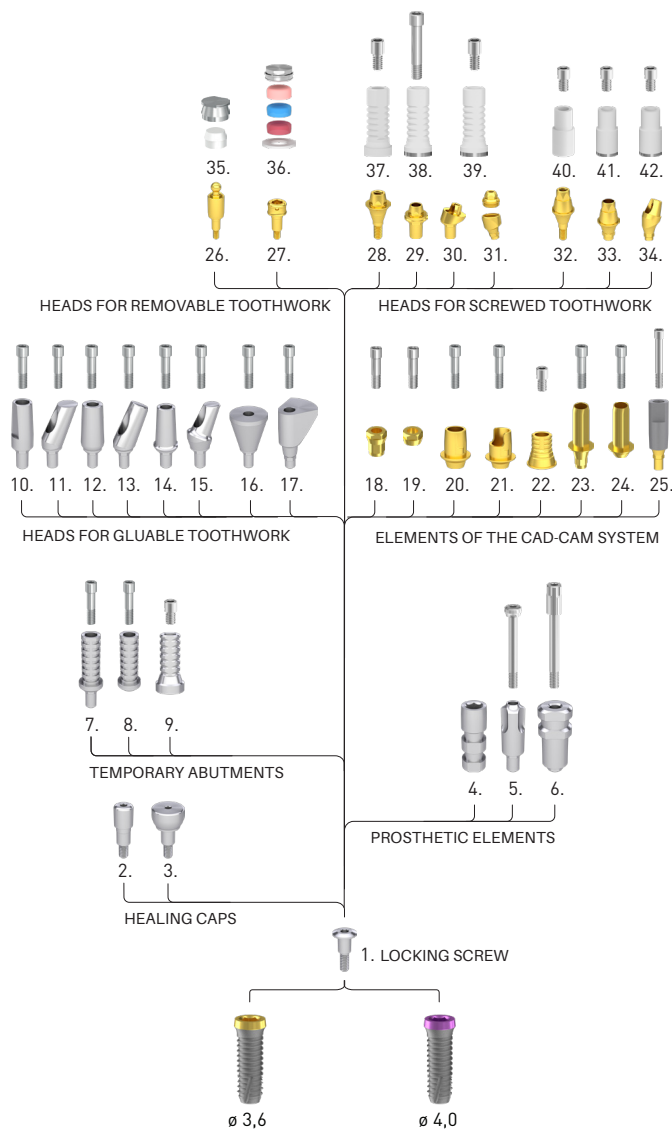
Implant diameters and colour codes: ● 3,6 ● 4,0

	Denomination	Sulkus (mm)	Height (mm)
1	Locking screw	-	-
2	Healing screw, narrow	2 4 6	
3	Healing screw, anatomical	2 4 6	
4	Lab analog		12
5	Impression coping for closed tray		11
6	Impression coping for open tray		11
7	Temporary abutment, positioned		12
8	Temporary abutment, non-positioned		12
9	Temporary abutment, multi-unit level		12
10	Narrow abutment, straight		9
11	Narrow abutment, 15°, 25° oblique		9
12	Universal abutment, straight		11
13	Universal abutment, 15°, 25°, 25°, 45° oblique		11
14	Anatomical abutment, straight	2 4 6	
15	Anatomical abutment, 15°, 25° oblique	2 4 6	
16	Trapezoidal abutment 15°, 25°, 35°, 45°		9 11 13
17	Delta abutment 15°, 25°, 35°, 45°		9 11 13
18	Interface, positioned	-	-
19	Interface, non-positioned	-	-
20	Titanium base		5
21	Flexi titanium base		5
22	Titanium base, multi-unit level		
23	Tube abutment, positioned		9
24	Tube abutment, non-positioned		9
25	Scanbody abutment, through-bolted		12
26	Ball retention abutment	0,5 1 2 3 4 5 6 7	
27	Locator abutment, straight	0,5 1 2 3 4 5 6 7	
28	Multi-unit abutment, straight	0,5 1 2 3 4 5 6 7	
29	Multi-unit abutment, through-bolted	0,5 1 2 3 4 5 6 7	
30	Multi-unit abutment, 20°, 30° oblique	1 2 3 4 5 6 7	
31	Multi-Compact abutment, 20°, 30° oblique	1 2 3 4 5 6 7	
32	Multi-unit SR abutment, straight	0,5 1 2 3 4 5 6 7	
33	Multi-unit SR abutment, through-bolted	0,5 1 2 3 4 5 6 7	
34	Multi-unit SR abutment, 20°, 30° oblique	1 2 3 4 5 6 7	
35	OC metal cap, OC plastic insert, 1,8 ; 2,5	-	-
36	Locator cap set	-	-
37	Castable plastic head, plastic, Multi-unit	-	-
38	Castable plastic head, Co-Cr based, Multi-unit	-	-
39	Castable plastic head, titan based, Multi-unit	-	-
40	Castable plastic head, Multi-unit SR	-	-
41	Castable plastic head, Co-Cr based, Multi-unit SR	-	-
42	Castable plastic head, titan based, Multi-unit SR	-	-

Sizes can be varied according to unique requests.

The functional structure of the BIOS system elements

Grade 4 quality titanium is applied in the case of the implants and Grade 5 quality titanium is applied in the case of the abutments.



BIOSS

IMPLANT SYSTEM

The “champion” of soft bones



BIONIKA Medline Kft • 3516 Miskolc, Tégla u. 29.
www.bionika.hu • trade@bionika.hu
 mobil: +36 70 362-9235

About the company

Bionika Medline Kft. was established in 1989 by private individuals as a family-owned Hungarian company. We have more than 35-year-experience in the field of medical instruments and implant development, production and trade.

BIONIKA as a researcher, developer, manufacturer and distributor is present in dentistry, oral surgery, traumatology, orthopedics and rehabilitation in the medical-professional areas. According to our objective and perception, we attach great importance to the word „BIONIKA“, which marks a scientific thinking on the boundaries of biology, technology and electronics that combines these three areas in our researching and developing work.



Clinical and technological experiences:

The continuous process, combination and utilization of clinical and technological experiences in development contributes to our success, up to the production base. Here you will find the best solutions and constructions suited to customer needs, which are under continuous development.

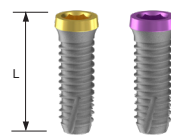
Development: The owners of BIONIKA put great emphasis on continuous product and technological research and development. Our products are developed in close collaboration with doctors and engineers, enabling us to ensure the world-class quality and practical utilization.

Quality: The quality of the products expected by our customers is guaranteed by design, manufacturing and quality management according to the harmonized European Union laws. The BIONIKA Medline Kft. is operated according to the EN ISO 9001 and the EN ISO 13485 quality management system. Our products are provided with CE marks.

Guarantee: After inserting the implant - the risk of the ossification process is assumed by BIONIKA, independently of cause and effect relationship – exchange guarantee is ensured within one year after the purchase. Otherwise, we provide a long-term, 10-year guarantee for our products.

The BLOSS System range of implants and abutments

BLOSS Implant



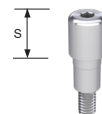
IMPLANT HEIGHT	PLATFORM	
	ø 3,6	ø 4,0
9,5 mm	●	●
11,5 mm	●	●
13,5 mm	●	●
15,5 mm	●	●

It is compatible with several systems in terms of implantation instruments. The system is compatible, but not a copy.

In terms of function, it is an excellent ossifying construct with high primary stability even in soft bone.

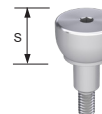
The structures are manufactured with high precision and are therefore free of micromovements.

Healing screw, narrow



SULCUS (S)	PLATFORM	
	ø 3,6	ø 4,0
2 mm	●	●
4 mm	●	●
6 mm	●	●

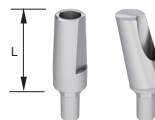
Healing screw, anatomical



SULCUS (S)	PLATFORM	
	ø 3,6	ø 4,0
2 mm	●	●
4 mm	●	●
6 mm	●	●

Narrow abutment

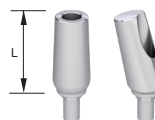
- straight
- angled 15°, 25°



HEIGHT (L)	PLATFORM	
	ø 3,6	ø 4,0
STRAIGHT		
7 mm	●	●
9 mm	●	●
ANGLED		
9 mm	●	●

Universal abutment

- straight
- angled 15°, 25°



HEIGHT (L)	PLATFORM	
	ø 3,6	ø 4,0
10 mm	●	●

Anatomical abutment,

- straight
- angled 15°, 25°



HEIGHT (L)	PLATFORM	
	ø 3,6	ø 4,0
STRAIGHT		
7 mm	●	●
9 mm	●	●
ANGLED		
9 mm	●	●

The BLOSS System range of implants and abutments

OC metal cap OC plastic insert



SULCUS (S)	PLATFORM	
	ø 3,6	ø 4,0
0,5 mm	●	●
1 mm	●	●
2 mm	●	●
3 mm	●	●
4 mm	●	●
5 mm	●	●
6 mm	●	●
7 mm	●	●

- Ball retention abutment
Normal ø 2,5mm
- Ball retention abutment
Micro ø 1,8mm



- Locator abutment



Multi-unit abutment

- straight
- angled



SULCUS (S)	PLATFORM	
	ø 3,6	ø 4,0
0,5 mm	●	●
1 mm	●	●
2 mm	●	●
3 mm	●	●
4 mm	●	●
5 mm	●	●
6 mm	●	●
7 mm	●	●

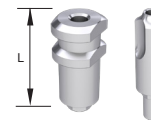
Titanium base



HEIGHT (L)	PLATFORM	
	ø 3,6	ø 4,0
	●	●

Impression coping

- for open tray
- for closed tray



HEIGHT (L)	PLATFORM	
	ø 3,6	ø 4,0
11 mm	●	●

Lab analog



HEIGHT (L)	PLATFORM	
	ø 3,6	ø 4,0
12 mm	●	●