

The abutment selections of the T-Rex system

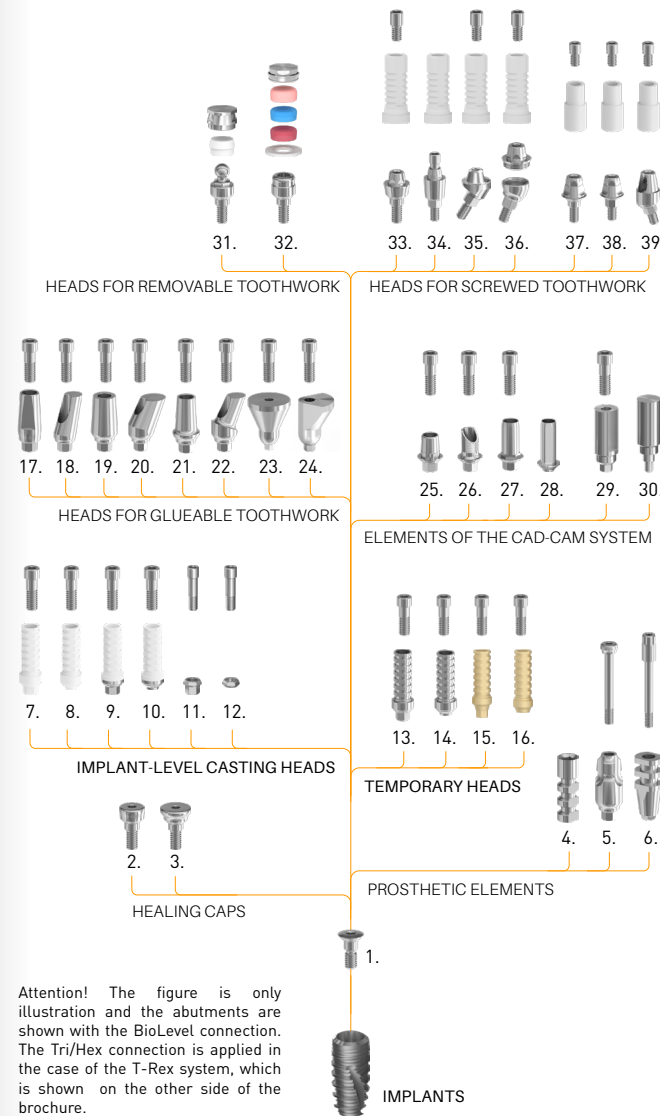
Implant diameters (mm): $\varnothing 2.9$, $\varnothing 3.3$, $\varnothing 3.7$, $\varnothing 4.5$, $\varnothing 5.5$

Denomination	Sulcus height (mm)	Head height (mm)
1 Locking screw	-	-
2 Healing cap, narrow	2 4 6	
3 Healing cap, anatomical	2 4 6	
4 Technical implant		12
5 Sampling head for closed spoon		11
6 Sampling head for open spoon		11
7 Castable plastic head, positioned		12
8 Castable plastic head, non-positioned		12
9 Co-Cr, metal based cast head, positioned		12
10 Co-Cr, metal based cast head, non-positioned		12
11 Interface, positioned		
12 Interface, non-positioned		
13 Temporary head, positioned		12
14 Temporary head, non-positioned		12
15 Temporary head, positioned, PEEK		12
16 Temporary head, non-positioned, PEEK		12
17 Narrow head, straight		9
18 Narrow head, 15°, 25° oblique		9
19 Universal head, straight		11
20 Universal head, 15°, 25°, 25°, 45° oblique		11
21 Anatomical head, straight	2 4 6	
22 Anatomical head, 15°, 25° oblique	2 4 6	
23 Trapezoidal head 15°, 25°, 35°, 45°		9 11 13
24 Delta head 15°, 25°, 35°, 45°		9 11 13
25 Titanium base		5
26 Press ceramic base		5
27 Tube head, positioned		9
28 Tube head, non-positioned		9
29 Scanbody head, through-bolted		12
30 Scanbody head, screwable		12
31 Ball head	0,5 1 2 3 4 5 6 7	
32 Locator head, straight	0,5 1 2 3 4 5 6 7	
33 Multi-unit head, straight	0,5 1 2 3 4 5 6 7	
34 Multi-unit head, through-bolted	0,5 1 2 3 4 5 6 7	
35 Multi-unit head, 20°, 30° oblique	1 2 3 4 5 6 7	
36 Multi-Compat head, 20°, 30° oblique	1 2 3 4 5 6 7	
37 Multi-unit SR head, straight	0,5 1 2 3 4 5 6 7	
38 Multi-unit SR head, through-bolted	0,5 1 2 3 4 5 6 7	
39 Multi-unit SR head, 20°, 30° oblique	1 2 3 4 5 6 7	

Sizes can be varied according to unique requests.

The functional structure of the T-Rex system

Grade 4 quality titanium is applied in the case of the implants and Grade 5 quality titanium is applied in the case of the abutments. Our abutments can be made of Co-Cr material and POM or PEEK materials are applied in the case of plastic heads.



K22-MD07-065

BIONIKA

T-REX
IMPLANT SYSTEM



BIONIKA Medline Kft • 3516 Miskolc, Tégla u. 29.
www.bionika.hu • info@bionika.hu
phone: +36 70 670-6875

The products in the publication are only illustrations, they do not cover the exact appearance and shape of the product.

ABOUT THE COMPANY

BIONIKA Medline Orvostechikai Kft. Is a member of the Swedish-Hungarian group of companies. It was founded in 1989. The owners of the company are Swedish and Hungarian citizens. We have more than 30-year-experience in the field of medical instruments and implant development, production and trade.

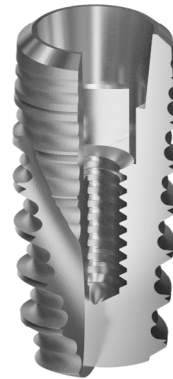
BIONIKA as a researcher, developer, manufacturer and distributor is present in dentistry, oral surgery, traumatology, orthopedics and rehabilitation in the medical-professional areas. According to our objective and perception, we attach great importance to the word „BIONIKA”, which marks a scientific thinking on the boundaries of biology, technology and electronics that combines these three areas in our researching and developing work.

Clinical and technological experiences: The continuous process, combination and utilization of clinical and technological experiences in development contributes to our success, up to the production base. Here you will find the best solutions and constructions suited to customer needs, which are under continuous development.

Development: The owners of BIONIKA put great emphasis on continuous product and technological research and development. Our products are developed in close collaboration with doctors and engineers, enabling us to ensure the world-class quality and practical utilization.

Quality: The quality of the products expected by our customers is guaranteed by design, manufacturing and quality management according to the harmonized European Union laws. The BIONIKA Medline Kft. is operated according to the EN ISO 9001 and the EN ISO 13485 quality management system. Our products are provided with CE marks.

Guarantee: After inserting the implant - the risk of the ossification process is assumed by BIONIKA, independently of cause and effect relationship – exchange guarantee is ensured within one year after the purchase. Otherwise, we provide a long-term, 10-year guarantee for our products.



The distinctive characteristics of the T-Rex system

Connection: „Tri/Hex”

Platform switching

The diameter of the abutment is smaller than the outer part of the implant which is connected to the bone. This way the soft tissue closes upon the ingoing aperture and the implant's connecting surface of the bone nest, covering, insulating that like as a sealing ring.

Exceptional primer stability

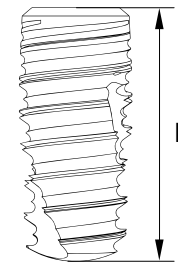
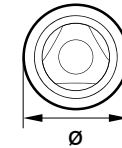
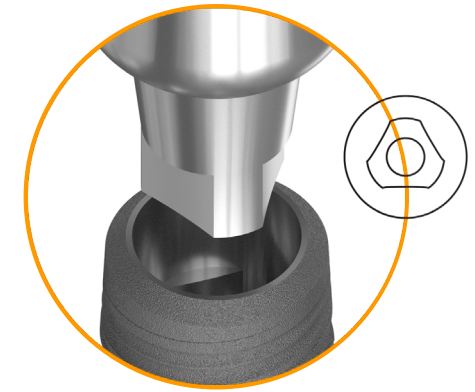
in the case of bad bone quality due to the multifunctional geometrical thread.

Anatomical root form

The T-Rex follows the form of the anatomical tooth root. Due to the conicity, high thread pitch, high thread deepness, self-closing and self-tapping shaping of the implant screw thread, it has a bone-compacting effect. Thus, there is an option for immediate loadness of the implant as needed as a result of the high primer stability.

„BioTis” surface

A variable insertion direction on the go for a perfect positioning



Sizes available of the T-Rex implants

diameter D (mm)	Inserting length L (mm)					
	6	8	10	11.5	13	16
ø 3.3		•	•	•	•	•
ø 3.8	•	•	•	•	•	•
ø 4.3	•	•	•	•	•	•
ø 5.3	•	•	•	•	•	
ø 6.3	•	•	•	•		

BIONIKA Medline Kft • 3516 Miskolc, Tégla u. 29.
www.bionika.hu • info@bionika.hu
 phone: +36 70 670-6875