



[www.bionika.hu](http://www.bionika.hu) • [www.shop.bionika.hu](http://www.shop.bionika.hu)

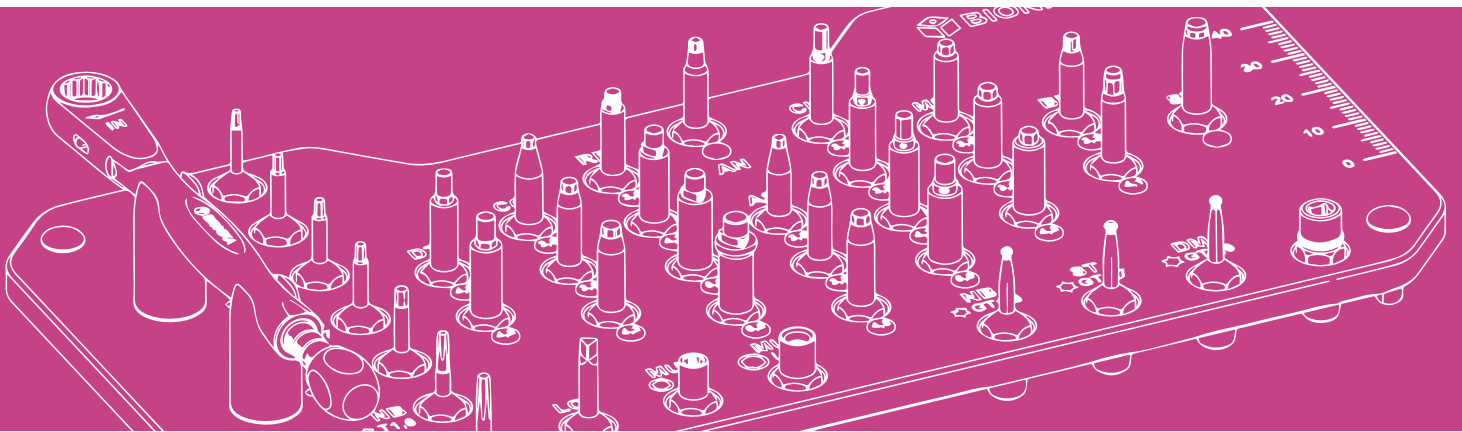
BIONIKA MEDLINE KFT • 3516 Miskolc, Tégla u. 29. • [info@bionika.hu](mailto:info@bionika.hu)

K19-MD03-034



# TRAVEL

## SCREWDRIVERS AND TEST KITS





# TABLE OF CONTENTS

## TRAVEL screwdriver kits

**3** ..... About the company

**4** ..... TRAVEL key kits

**5** ..... Ratchet torque wrench

**6** ..... TRAVEL Screwdriver kit

**8** ..... TRAVEL Implant test kit

**10** ... TRAVEL Dual screwdriver and key set







# BIONIKA | ABOUT THE COMPANY

**BIONIKA** Medline Orvostechnikai Kft. was established in 1989. Its predecessor was founded in 1989. The owners of the company are Swedish and Hungarian citizens. We have a 30-year-experience in the field of medical instruments and implant development, production and trade.

According to our objective and perception, we attach great importance to the word „BIONIKA“, which marks a scientific thinking on the boundaries of biology, technology and electronics that combines these three areas in our researching and developing work.

## **Clinical and technological experiences:**

The continuous process, combination and utilization of clinical and technological experiences in development contributes to our success, up to the production base. Here you will find the best solutions and constructions suited to customer needs, which are under continuous development.

## **Development:**

The owners of BIONIKA put great emphasis on continuous product and technological research and development. Our products are developed in close collaboration with doctors and engineers, enabling us to ensure the world-class quality and practical utilization.

## **Quality:**

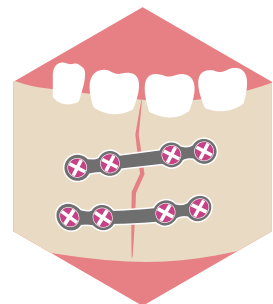
The quality of the products expected by our customers is guaranteed by design, manufacturing and quality management according to the harmonized European Union laws. The BIONIKA Medline Kft. is operated according to the EN ISO 9001 and the EN ISO 13485 quality management system. Our products are provided with CE marks.

## **Guarantee:**

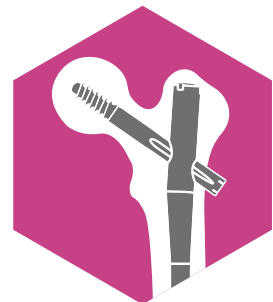
After inserting the implant - the risk of the ossification process is assumed by BIONIKA, independently of cause and effect relationship - exchange guarantee is ensured within one year after the purchase. Otherwise, we provide a long-term, 10-year guarantee for our products.



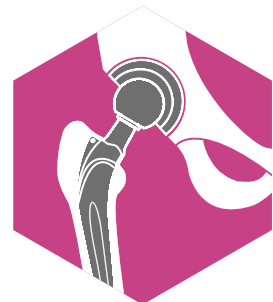
DENTISTRY



ORAL SURGERY



TRAUMATOLOGY



ORTHOPEDICS

# BIONIKA TRAVEL KEY AND TEST KITS

KEYS IN SETS OR SEPARATELY • FOR DENTAL TECHNICIANS • FOR TRAVELLING IMPLANTOLOGISTS



## TRAVEL screwdriver kit

Basic set in light anodised aluminium box. Includes: 13 manual keys, an adapter for using machine elbow stems and a ratchet torque wrench. Labeling makes the utilization easier.

## TRAVEL implant test key kit

It consists of 23 keys and one ratchet torque wrench in light anodised aluminium box. Labeling and colour coding make the utilization easier.



## TRAVEL Dual wrench and test kit

It includes the two TRAVEL kit in light anodised aluminium box. It consists of 36 keys, an adapter and a ratchet torque wrench. Labeling and colour coding make the utilization easier.



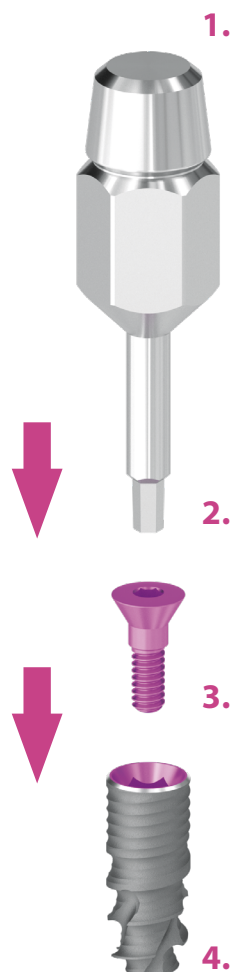
# BIONIKA RATCHET TORQUE WRENCH

The ratchet torque wrench is used to tighten and insert screws and implants. Using pre-set torque, this prevents the implant from fracturing and ensures the optimum power transfer when inserting the implant.

The scale of the torque rates from 15 to 35 Ncm, with plus or minus 5% accuracy. The scale on the opposite side can be used as a reverse torque. The ratchet torque wrench can also function as a simple ratchet.



1. Ratchet torque wrench
2. Manual implant driver
3. Locking screw
4. Implant



- ERGONOMIC CONSTRUCTION
- RELIABLE LIFETIME
- PRECISE TORQUE CONTROL
- STAINLESS STEEL
- SOUND SIGNAL
- REPLACABLE KEY INTERLINE
- THE TORQUE VALUE DOES NOT STOP DURING USE
- PROFESSIONAL QUALITY

15 Ncm  
25 Ncm  
35 Ncm  
endless torque

The desired torques can be adjusted from 15 Ncm to the right



# BIONIKA TRAVEL SCREWDRIVER KIT

Basic set in light, anodised aluminium box . Includes: 13 manual keys, an adapter for using machine elbow stems and a ratchet torque wrench. Labeling makes the utilization easier.

The ratchet torque wrench is used to tighten and insert screws and implants.

## Function of the **storage box**



# THE LAYOUT OF THE BIONIKA **TRAVEL** SCREWDRIVER SET ELEMENTS

## Code letter chart

<b>A</b> <b>Adapter</b> for mechanical elbow stems	<b>CL</b> <b>CamLog</b> , CONELOG, Dentium, CortiLog, Corticon, Cortical, Scandrea, HiCON	<b>LC</b> <b>Locator</b> key	<b>NB</b> <b>Nobel</b>
<b>AN</b> <b>Ankylos</b>	<b>DM</b> <b>Dinamic</b>	<b>MS</b> <b>MIS, Medis</b> , Bio-Horizont, Zimmer, Direct Legacy, IQ, AlphaBio, AB, Astra, Cortex, BioLevel	<b>PE</b> <b>Pitt-Easy</b> , Bioplant, Conefit
<b>BL</b> <b>Straumann BoneLevel</b> , Bonelit	<b>DT</b> <b>Denti</b> , Dentium, DIO, Periotype, Osstem	<b>MU</b> <b>Multi-unit</b> key	<b>ST</b> <b>Straumann</b>





 <b>AN</b> 6xLt1 <b>Ankylos</b>	 <b>DT</b> 6xLt1.2 <b>Denti</b> , DIO, Periotype, Osstem	 <b>MS</b> 6xLt1.25 <b>Alpha Bio, Astra,</b> <b>Direct Legacy</b>	 <b>CL</b> 6xLt1.27 <b>Camlog</b> , Cortilog, Cortical, Scandrea, HiCON
 <b>PE</b> 6xLt1.67 <b>Pitt-Easy</b> , Bioplant, Conefit	 <b>NB</b> T1.6 Torx <b>Nobel CC</b> , -Tri-Lobe, -Parallel, -Brånemark	 <b>ST, BL</b> T1,7 Torx <b>Straumann</b> , Bone Level, Tissue Level	 <b>A</b> <b>Adapter</b> for mehanical elbow stems
 <b>NB</b> GT 1.6 <b>Nobel</b> ball torx key	 <b>ST</b> GT 1.7 <b>Straumann</b> ball torx key	 <b>DM</b> GT 1.8 <b>Dinamic</b> ball torx key	 <b>LC</b> <b>Locator</b> key
 <b>MU</b> Lt 2,0 <b>Multi-unit</b> key	 <b>MU</b> Lt 2,7 <b>Multi-unit</b> and ball-head key		



# BIONIKA TRAVEL IMPLANT TEST KEY KIT

It consists of 23 keys and one ratchet torque wrench in light anodised aluminium box. Labeling and colour coding make the utilization easier. The

ratchet torque wrench is used to tighten and insert screws and implants.

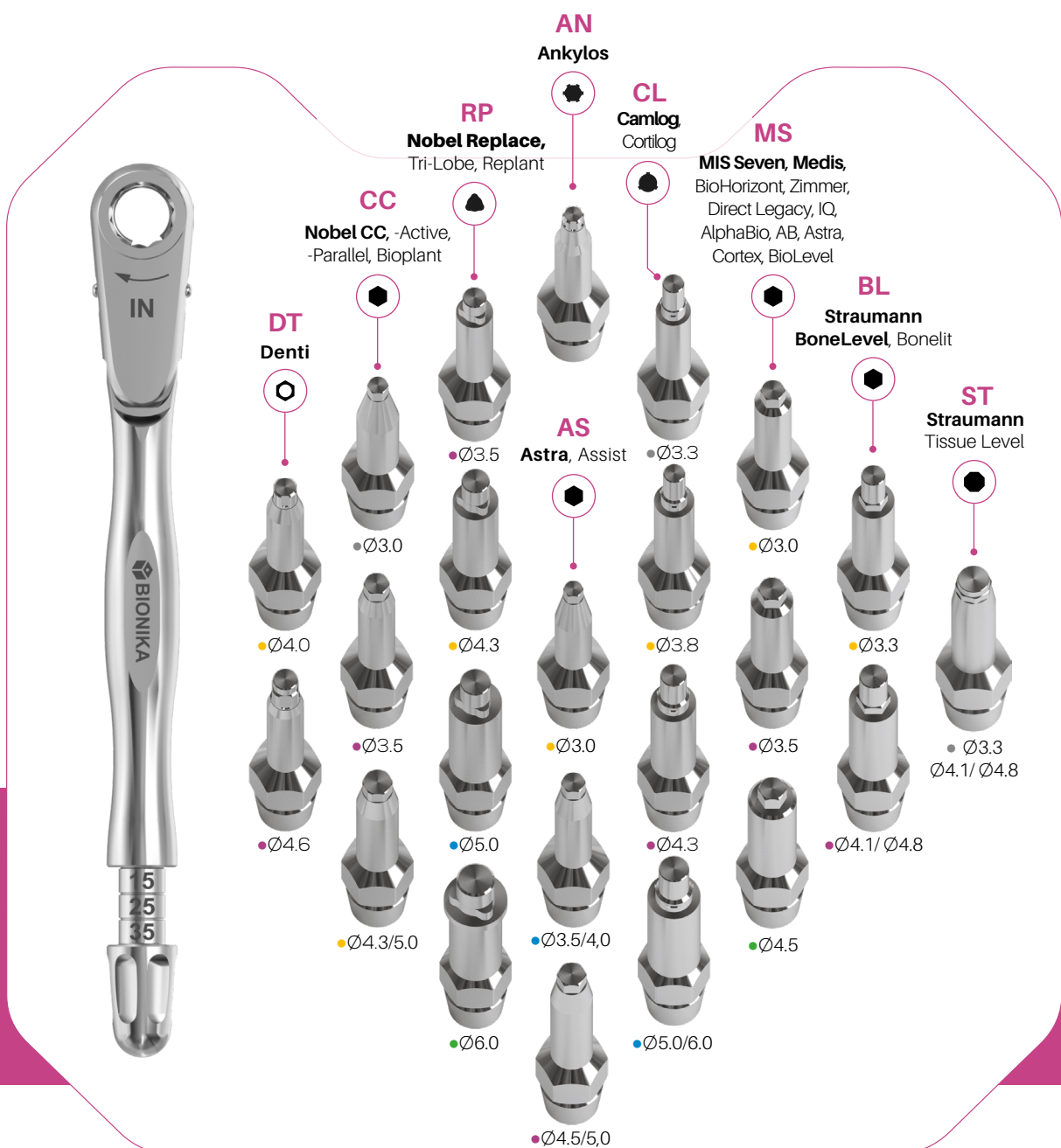
## Function of the storage box



# THE LAYOUT OF THE BIONIKA TRAVEL IMPLANT TEST KEY KIT ELEMENTS

## Code letter chart

<b>AN</b> Ankylos	<b>CC</b> Nobel CC, -Active, -Parallel, Bioplant	<b>MS</b> MIS Seven, Medis, BioHorizont, Zimmer, Direct Legacy, IQ, AlphaBio, AB, Astra, Cortex, BioLevel
<b>AS</b> Astra, Assist	<b>CL</b> CamLog, CortiLog	<b>RP</b> Nobel Replace, Tri-Lobe, Replant
<b>BL</b> Straumann BoneLevel, Bonelit	<b>DT</b> Denti	<b>ST</b> Straumann





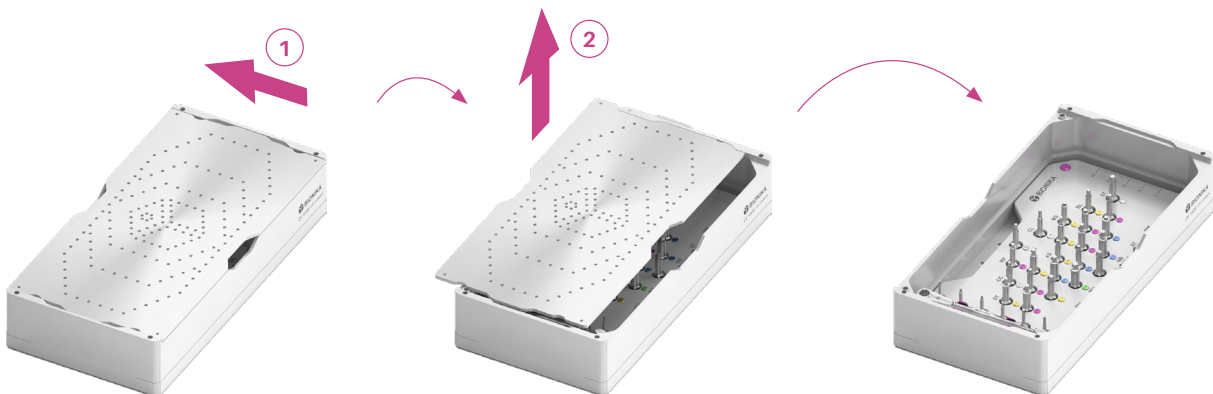
# BIONIKA TRAVEL DUAL WRENCH AND TEST KIT

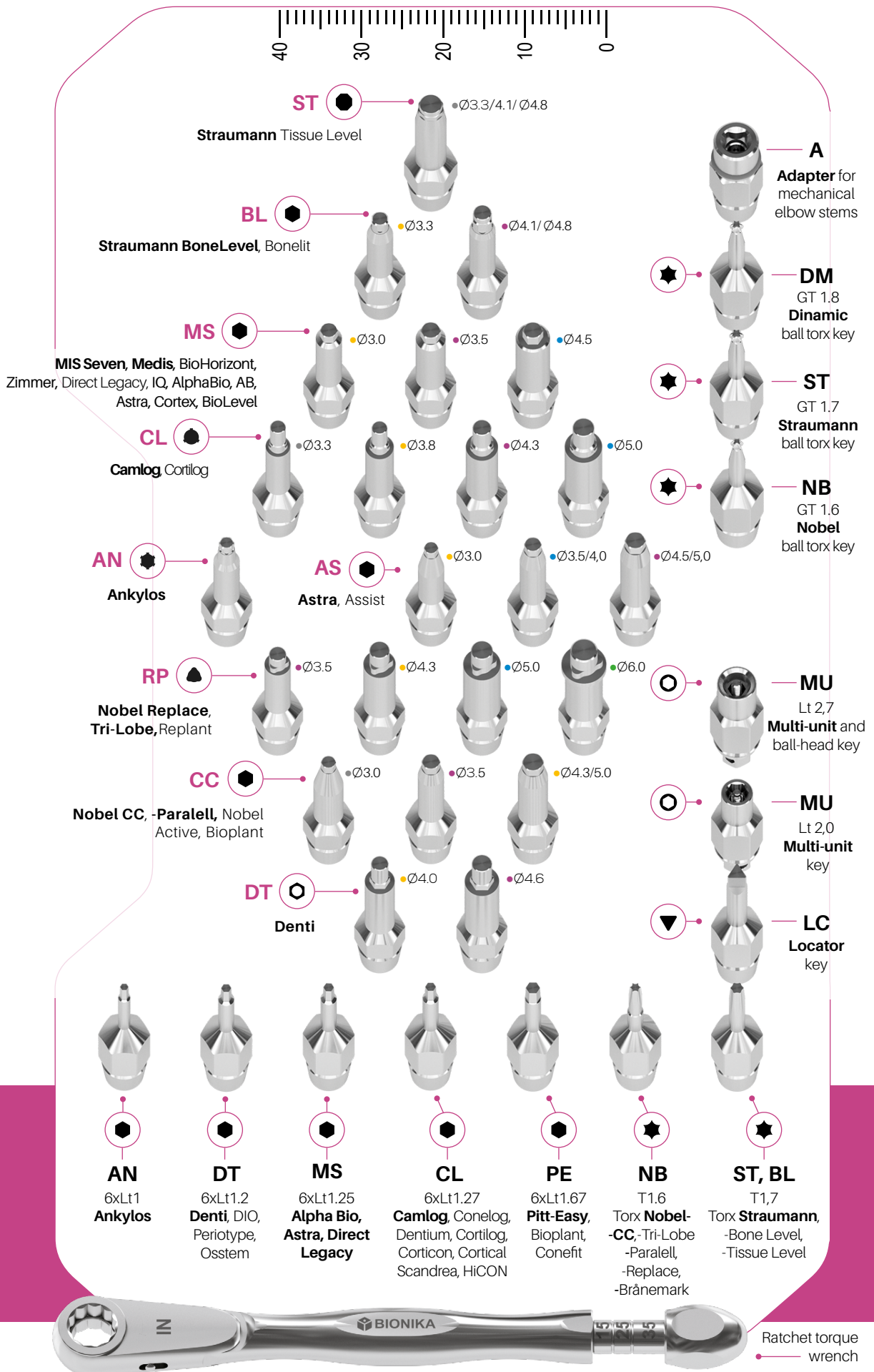
Code letter chart- wrenches

<b>A</b> Adapter for mechanical elbow stems	<b>DM</b> Dinamic	<b>MU</b> Multi-unit key
<b>AN</b> Ankylos	<b>DT</b> Denti, Dentium, DIO, Periotype, Osstem	<b>NB</b> Nobel
<b>BL</b> Straumann BoneLevel, Bonelit	<b>LC</b> Locator key	<b>PE</b> Pitt-Easy, Bioplant, Conefit
<b>CL</b> CamLog, CONELOG, Dentium, CortiLog, Corticon, Cortical, Scandrea, HiCON	<b>MS</b> MIS, Medis, BioHorizont, Zimmer, Direct Legacy, IQ, AlphaBio, AB, Astra, Cortex, BioLevel	<b>ST</b> Straumann

Code letter chart - implant test keys

<b>AN</b> Ankylos	<b>DT</b> Denti
<b>AS</b> Astra, Assist	<b>MS</b> MIS Seven, Medis, BioHorizont, Zimmer, Direct Legacy, AlphaBio, AB, IQ, Astra Cortex, BioLevel
<b>BL</b> Straumann BoneLevel, Bonelit	
<b>CC</b> Nobel CC, -Active, -Parallel, Bioplant	<b>RP</b> Nobel Replace, Tri-Lobe, Replant
<b>CL</b> CamLog, CortiLog	<b>ST</b> Straumann





**Get to know** our other products!  
Ask for our catalogs or visit one of our websites below:



[www.bionika.hu](http://www.bionika.hu)



[www.shop.bionika.hu](http://www.shop.bionika.hu)



# More than 50 types of abutments

For titanium, Co-Cr alloy, plastic and zirconium toothworks

